

Akcesoria drzwiowe

ZAWIASY SPAWANE



do profili stalowych

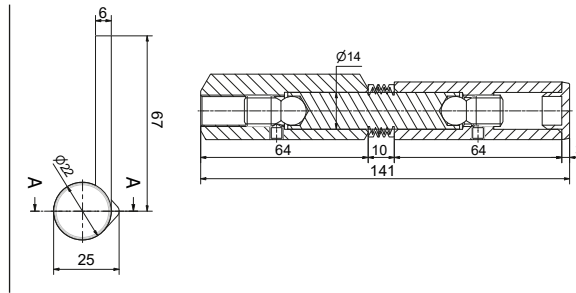
2025

Art. 219

Zawias regulowany ze skrzydełkiem



stal ocynkowana



- Adjustable turned hinge with sheet metal wing
- Charnière ajustable avec ailette en tôle
- Bisagra torneada ajustable con ala de chapa
- Verstellbares gedrehtes Schamier mit Blechflügel

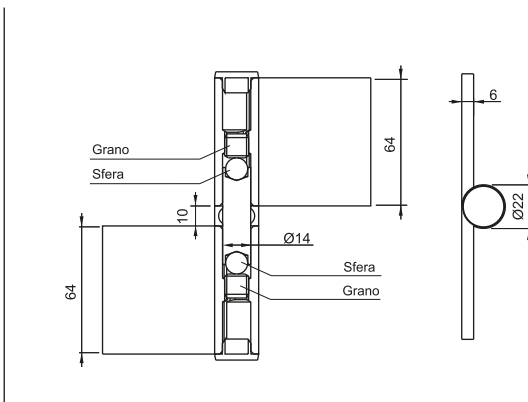
Art.	Perno	Peso(g)	Conf.
219		520	8

Art. 115

Zawias regulowany ze sworzniem kulowym

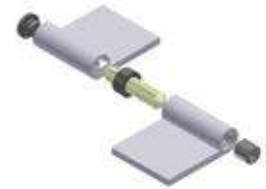


stal ocynkowana



- Hinge with double adjustment, balls pin in cemented steel, rubber spacer
- Charnière à double réglage, avec pivot à sphères en acier cimenté, espaceur en caoutchouc
- Charnela doble regulación, con pernio a bolas de acero cementado, distanciador de goma
- Anschweißband mit Dualverriegelung, Kugelstift und Zwischenstück aus Gummi

Art.	Peso(g)	Conf.
115	555	8

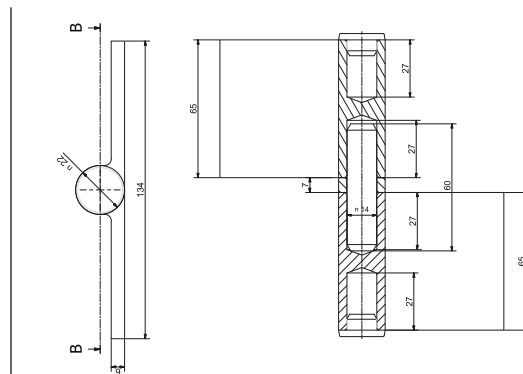


Art. 214

Zawias regulowany ze skrzydełkami i wyjmowanym trzpieniem



stal ocynkowana







- Ambidextro hinge with washer and removable pin
- Charnière ambidextre avec rondelle et pivot extractible
- Bisagra ambidextra con arendela y pernio extraíble
- Formgepresstes verstellbares 3-teiliges Anschweißband mit Edelstahl-Stift Befestigungsdübel.

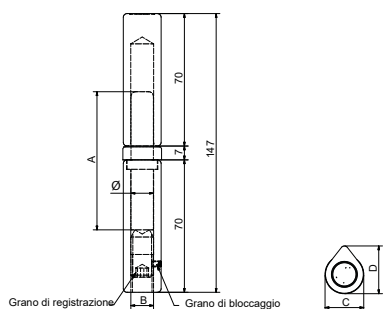
Art.	perno	rond.	finitura	Peso(g)	Conf.
214.3.5	ottone	ottone	grezza	710	8
214.2.5	ferro zinc	ferro zinc	grezza	710	8
214.2.4	ferro zinc	cuscinetto	grezza	710	8
214.3.5.76	ottone	ottone	zincata	710	8
214.2.5.76	ferro zinc	ferro zinc	zincata	710	8
214.2.4.76	ferro zinc	cuscinetto	zincata	710	8



Zawias regulowany wciskany

Art. 223

-  *Pressed adjustable hinge*
-  *Charnière réglable à moulage*
-  *Bisagra ajustable impresa*
-  *Gepresstes verstellbares Scharnier*







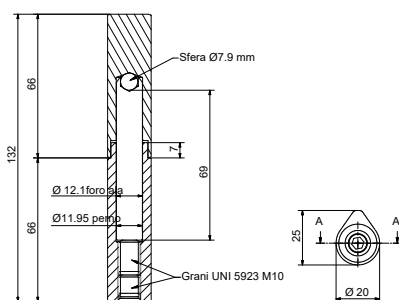
stal surowa

Art.	A	B	C	D	Ø	Peso(g)	Conf.
223/1	73	M12	20	25	12	370	20
223/2	77	M12	22	25	14	420	15

Zawias regulowany toczony

Art. 216

-  *Adjustable turned hinge with pin*
-  *Paumelle réglable façonnée au tour avec pivot*
-  *Charnela torneada perfilada a gota con pernio*
-  *Einstellbares Tropfen-Anschweißband*







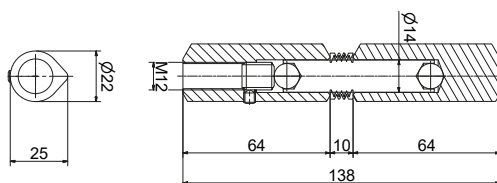
stal surowa

Art.	Peso(g)	Conf.
216	340	20

Zawias regulowany 22x25

Art. 218

-  *Adjustable turned hinge 22X25*
-  *Charnière ajustable 22X25*
-  *Bisagra torneada ajustable 22X25*
-  *Verstellbares gedrehtes Scharnier mit Blechflügel*







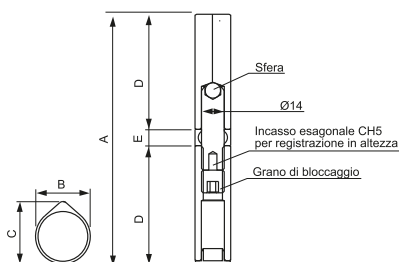
stal surowa

Art.	Peso(g)	Conf.
218	360	15

Zawias łożyskowy z zaślepkami, trzpień mosiężny

Art. 129

-  *Turned profile parisienne hinge with rubber spacer, stainless steel pin with ball*
-  *Charnière façonnée au tour profil en goutte, entretoise en gomme, pivot inox avec bille*
-  *Charnela regulable torneada a perfil gota con goma distanciadora, eje en inox con esfera*
-  *Formgepresstes einstellbares Tropfen-Anschweißband mit Messingstift*

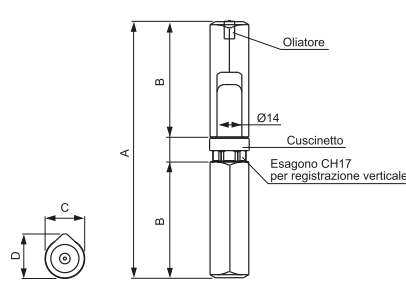


stal surowa





Art.	A	B	C	D	E	Peso(g)	Conf.
129/1	105	22	25	48	10	280	20
129/2	155	22	25	71	10	380	20

Art. 175

Zawias regulowany toczony, trzpień mosiężny



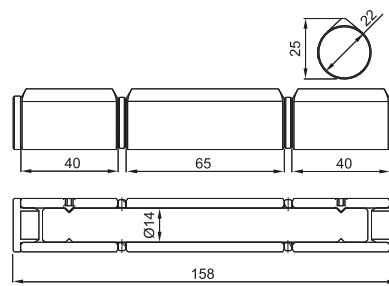
stal surowa

-  Adjustable turned hinge with brass covered pin
-  Paumelle réglable façonnée au tour avec pivot laitoné
-  Charnela torneada perfilada a gota con pernio cubierto de latón
-  Formgepresstes einstellbares Tropfen-Anschweißband mit Messingstift.

Art.	A	B	C	D	E	F	Peso(g)	Conf.
175	150	67	22	25	14	36	380	15

Art. 177

Zawias trzyskrzydłowy toczony, trzpień mosiężny



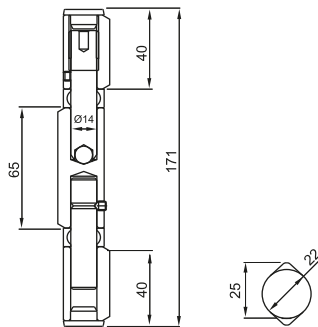
stal surowa

-  3 wings turned hinge for transom window brass with pin and fixing grub screws
-  Charnière 3 ailes façonnée au tour pour vasistas pivot laiton et grains fixation
-  Pernio torneado a tres alas para ventanas de toldo, con eje en latón y prisionero de fijación
-  Tropfen-Formgepresstes 3-teiliges einstellbares Anschweißband für Klappfenster mit Messings Stift und Befestigungsdübel




Art.	Peso(g)	Conf.
177	398	15

Art. 114

Zawias trzyskrzydłowy toczony regulowany z trzpieniem ze stali nierdzewnej



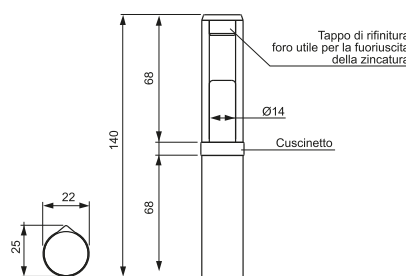
stal surowa

-  Adjustable three wings turned hinge drop profile with spacers
-  Charnière façonnée au tour réglable, profil en goutte, trois ailes, avec entretoises
-  Pernio torneado de tres alas, perfil de gota con separadores
-  Formgepresstes, verstellbares 3-teiliges Anschweißband mit Edelstahl-Stift und Befestigungsdübel.


Art.	Peso(g)	Conf.
114	430	15

Art. 135

Zawias z łożyskiem i plastikową zaślepką, trzpień mosiężny







stal surowa

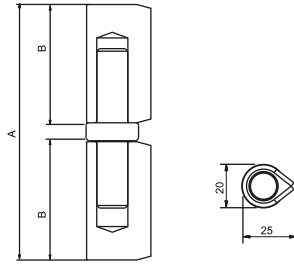
-  Turned hinge with thrust bearing and plastic cap, extractable brass pin
-  Paumelle façonnée avec roulement et capuchon plastique, pivot en laiton
-  Charnela torneada con rodamiento y tapon plastico, pernio en latón
-  Formgepresstes, Tropfen-Anschweißband mit Kugellager, Kunststoffkappe und ausziehbares Messings Stift

Art.	Peso(g)	Conf.
135	380	15

Zawias z wyjmowanym trzpieniem

Art. 211

-  *Parisienne drop hinge with extractable pin*
-  *Charniere Parisienne profil en goutte avec pivot à extraire*
-  *Bisagra Pariginaa perfila de gota con pernio extraible*
-  *Pariser Anschweißband mit ausziehbarem Stift*







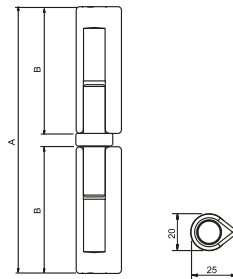
stal surowa

Art.	A	B	Perno	Ø Perno	Peso(g)	Conf.
211.2.4	100	46	ferro	12	257	25
211.3.4	100	46	ottone	12	257	20

Zawias toczone z wyjmowanym trzpieniem

Art. 212

-  *Turned profile drop hinge with extractable pin*
-  *Paumelle façonnée au tour avec pivot à extraire*
-  *Charnela torneada con pernio extraible*
-  *Formgepresstess Anschweißband mit ausziehbarem Stift*







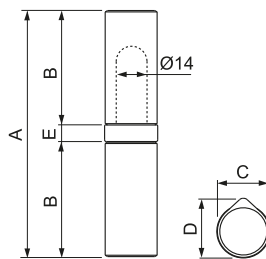
stal surowa

Art.	A	B	Perno	Ø Perno	Peso(g)	Conf.
212.2.4	147	70	ferro	12	342	20
212.3.4	147	70	ottone	12	342	20

Zawias toczone z trzpieniem i łożyskiem

Art. 176/C

-  *Turned hinge with pin and bearing*
-  *Paumelle façonnée au tour avec pivot et roulement*
-  *Charnela torneada con pernio y cojinete*
-  *Gedrehtes Scharnier mit Stift und Lager*







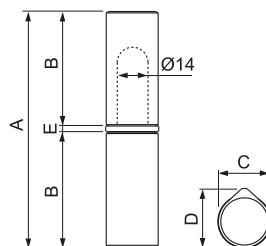
Profilo trafilato 22 x 25mm
stal surowa

Art.	A	B	C	D	E	Perno	Peso(g)	Conf.
176.1.4	149	71	22	25	7	ferro	430	15
176.3.4	149	71	22	25	7	ottone	450	15
176.2.4	101	47	22	25	7	ferro	282	25
176.4.4	101	47	22	25	7	ottone	286	25

Zawias toczone z trzpieniem mosiężnym i podkładką

Art. 176/R

-  *Turned hinge with brass washer*
-  *Paumelle façonnée au tour avec pivot et rondella en laiton*
-  *Charnela torneada con pernio y arandela de laton*
-  *Gedrehtes Scharnier mit Messingstift und Unterlegscheibe*



Profilo trafilato 22 x 25mm
stal surowa

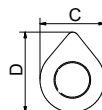
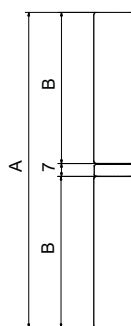
Art.	A	B	C	D	E	Perno	Peso(g)	Conf.
176.1.5	145	71	22	25	3	ferro	425	15
176.3.5	145	71	22	25	3	ottone	440	15
176.2.5	97	47	22	25	3	ferro	276	25
176.4.5	97	47	22	25	3	ottone	280	25

Art. 217 Zawias piaskowany z trzpieniem stalowym lub mosiężnym

Z ŁOŻYSKIEM



stal surowa



Drop profile parisienne hinge with steel, brass pin, with thrust bearing, sandblasted

Charnière parisienne profil en goutte avec pivot acier ou laiton, avec palier de butée, sablé

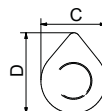
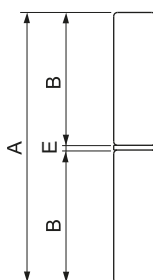
Bisagra à profil de gota con pernio interior en acero o latón, con rodamiento chorreado

Pariser Anschweißband mit Kugellager. Aus Stift aus Stahl, Edelstahl oder Messing, sandgestrahlt

Z PODKŁADKĄ



stal surowa



Drop profile parisienne hinge with steel, or brass pin, with thrust washer sandblasted

Charnière parisienne profil en goutte avec pivot acier ou laiton, avec rondelle de butée sablé

Bisagra a perfil de gota con pernio interior en acero o latón, con arandela, chorreado

Pariser Anschweißband mit Scheibe. Aus Stift aus Stahl, Edelstahl oder Messing, sandgestrahlt

Z ŁOŻYSKIEM / WITH THRUST BEARING

Art.	A	B	C	D	Perno	Peso(g)	Conf.	Ø Perno
217/18x100.2.4	100	46,5	18	22	inox	200	25	10
217/18x100.3.4	100	46,5	18	22	ottone	200	25	10
217/18x120.2.4	120	56,5	18	22	inox	240	20	10
217/18x120.3.4	120	56,5	18	22	ottone	250	20	10
217/20x140.2.4	140	66,5	20	25	acciaio	320	20	12
217/20x140.3.4	140	66,5	20	25	ottone	330	20	12
217/20x160.2.4	160	76,5	20	25	acciaio	420	15	12
217/20x160.3.4	160	76,5	20	25	ottone	430	15	12
217/23x180.2.4	180	86,5	23	28	acciaio	600	10	14
217/23x180.3.4	180	86,5	23	28	ottone	610	10	14
217/23x200.2.4	200	96,5	23	28	acciaio	680	8	14
217/23x200.3.4	200	96,5	23	28	ottone	690	8	14

Profilo stampato 18 x 22mm

Profilo stampato 20 x 25mm

Profilo stampato 23 x 28mm



Z PODKŁADKĄ MOSIĘŻNĄ / WITH BRASS PIN

Art.	A	B	C	D	E	Perno	Peso(g)	Conf.	Ø Perno
217/10.2.5	60	29	10	12	2	acciaio	40	80	6
217/10.3.5	60	29	10	12	2	ottone	40	80	6
217/13.2.5	80	38,5	13	16	2,5	acciaio	90	50	7
217/13.3.5	80	38,5	13	16	2,5	ottone	90	50	7
217/18x100.2.5	96	46,5	18	22	3	inox	200	25	10
217/18x100.3.5	96	46,5	18	22	3	ottone	200	25	10
217/18x120.2.5	116	56,5	18	22	3	inox	240	20	10
217/18x120.3.5	116	56,5	18	22	3	ottone	250	20	10
217/20x140.2.5	135,5	66,5	20	25	2,5	acciaio	330	20	12
217/20x140.3.5	135,5	66,5	20	25	2,5	ottone	340	20	12
217/20x160.2.5	155,5	76,5	20	25	2,5	acciaio	420	15	12
217/20x160.3.5	155,5	76,5	20	25	2,5	ottone	430	15	12
217/23x180.2.5	176	86,5	23	28	3	acciaio	600	10	14
217/23x180.3.5	176	86,5	23	28	3	ottone	610	10	14
217/23x200.2.5	196	96,5	23	28	3	acciaio	680	8	14
217/23x200.3.5	196	96,5	23	28	3	ottone	690	8	14

Profilo stampato 10 x 12mm

Profilo stampato 13 x 16mm

Profilo stampato 18 x 22mm

Profilo stampato 20 x 25mm

Profilo stampato 23 x 28mm



Zawias z trzpieniem ze stali, stali nierdzewnej lub mosiądzu

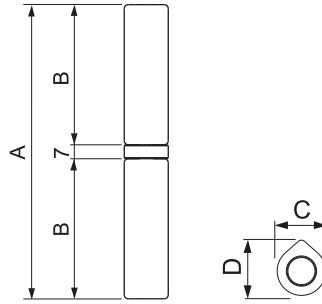
Art. 197

Drop profile parisienne hinge with steel, stainless steel or brass pin, with thrust bearing

Charnière parisienne profil en goutte avec pivot acier, acier inox ou laiton, avec palier de butée

Bisagra à perfil de gota con pernio interior en acero, acero inox o latón, con rodamiento

Pariser Anschweißband mit Kugellager. Aus Stiff aus Stahl, Edelstahl oder Messing



Z ŁOŻYSKIEM



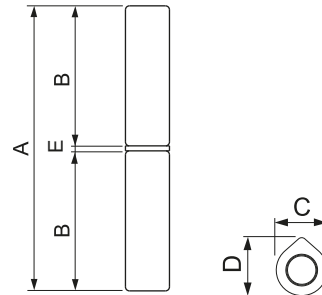
stal surowa

Steel, stainless steel or brass pin, parisienne hinge with washer

Charnière parisienne en acier, acier inox ou laiton, avec rondelle

Bisagra de acero, acero inoxidable o latón con arandela

Stiftschamier aus Stahl, rostfreiem Stahl oder Messing mit Unterlegscheibe






Z PODKŁADKĄ






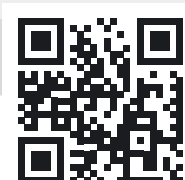
stal surowa

Z ŁOŻYSKIEM / WITH THRUST BEARING

	Art.	A	B	C	D	Perno	Peso(g)	Conf.	Ø Perno
 Profilo stampato 18 x 22mm	197/18.1.4	147	70	18	22	inox	252	25	10
	197/18.2.4	147	70	18	22	acciaio	252	25	10
	197/18.3.4	147	70	18	22	ottone	255	25	10
 Profilo stampato 20 x 25mm	197/20.1.4	147	70	20	25	inox	330	20	12
	197/20.2.4	147	70	20	25	acciaio	330	20	12
	197/20.2.4.140	140	66.5	20	25	acciaio	318	20	12
	197/20.3.4	147	70	20	25	ottone	333	20	12
 Profilo stampato 22 x 25mm	197/22.1.4	147	70	22	25	inox	368	15	14
	197/22.2.4	147	70	22	25	acciaio	368	15	14
	197/22.3.4	147	70	22	25	ottone	374	15	14

Z PODKŁADKĄ / WITH BRASS PIN

	Art.	A	B	C	D	E	Perno	Peso(g)	Conf.	Ø Perno
 Profilo stampato 18 x 22mm	197/18.1.5	135	66,5	18	22	2	inox	248	25	10
	197/18.2.5	135	66,5	18	22	2	acciaio	248	25	10
	197/18.3.5	135	66,5	18	22	2	ottone	250	25	10
 'profilo stampato 20 x 25mm	197/20.1.5	142.5	70	20	25	2.5	inox	325	20	12
	197/20.2.5	142.5	70	20	25	2.5	acciaio	335	20	12
	197/20.3.5	142.5	70	20	25	2.5	ottone	330	20	12
 Profilo stampato 22 x 25mm	197/22.1.5	143	70	22	25	3	inox	365	15	14
	197/22.2.5	143	70	22	25	3	acciaio	365	15	14
	197/22.3.5	143	70	22	25	3	ottone	370	15	14



//ALUMASTER®
WINDOWS AND DOORS SOLUTIONS

-  Alumaster Polska Sp. z o.o.
ul. Towarowa 7, 87-100 Toruń, Polska
-  tel. +48 56 623 13 23
-  alumaster@alumaster.pl
-  www.alumaster.pl