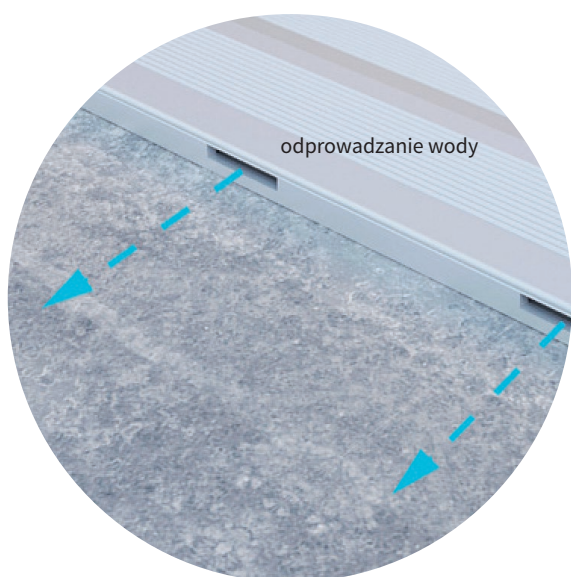


NEW!

ALUMASTER®
WINDOWS AND DOORS SOLUTIONS



Magnetic Thresholds MHT 10 i MHT 20



- **ENERGY EFFICIENCY:**
Thanks to thermal properties and optimal sealing,
- **DESIGN:**
Three types of thresholds available, with the possibility to level floor levels up to 30 mm,
- **FUNCTIONALITY:**
No wear and tear during operation, 20-year warranty on magnetic components,
- **VERSATILITY:**
Solutions for single-leaf doors, opening inward and outward, made of wood, aluminum, and PVC, in new and renovated buildings,

KEY PRODUCT CHARACTERISTICS

TESTED PROPERTIES:

- Soundproofing: R_{sw} up to 41 dB,
- Thermal transmittance coefficient: up to $1.52 \text{ W/m}^2\text{K}$,
- Load capacity: 2500 N - thresholds meet the strength requirements according to test report No. 2023-21-0010-B1 (surface area over 300 mm^2),

HIGHLY RECOMMENDED FOR:

- New and existing buildings,
- Nursing homes, retirement homes.,
- Hospitals, clinics, medical centers.,
- Nurseries, preschools, homes for individuals with disabilities,
- Single and multi-family residential construction,

APPLICATION:

- For single-leaf doors,
- Both external and internal doors,
- For doors made of wood, aluminum, wood-aluminum composite, and PVC,

TYPES OF THRESHOLDS

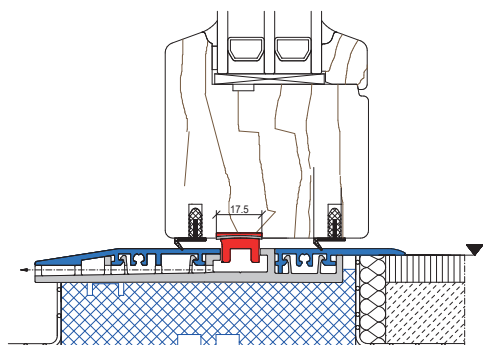
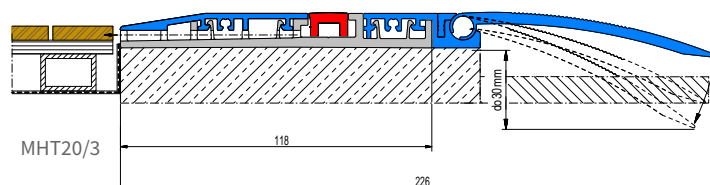
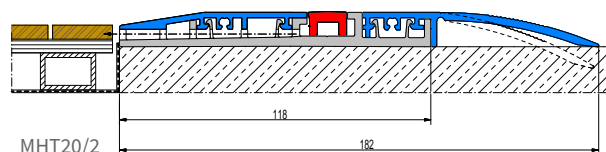
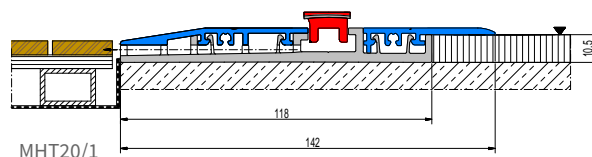


Fig. 1 - for wooden profiles

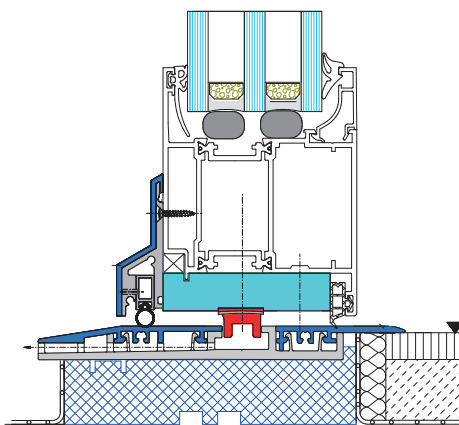


Fig. 2 - for aluminum profiles

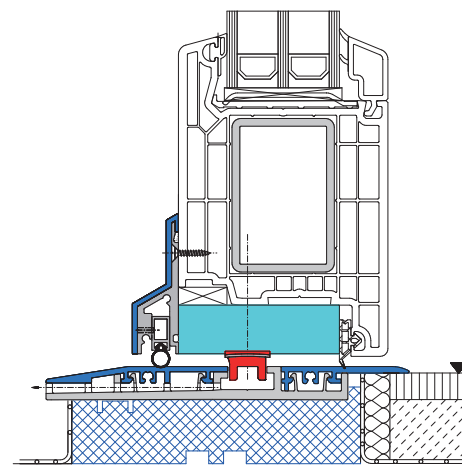


Fig. 3 - for PVC profiles



We invite you to contact us at:
Phone +48 56 623 13 23
alumaster@alumaster.pl



Alumaster Polska Sp. z o.o.
ul. Towarowa 7
87-100 Toruń, Poland



www.alumaster.pl